

Stop guessing, trust the planning

How to Improve Predictability and Increase Profitability with Your Clear Aligner Treatments.

If you are tired of endless refinements, eating into chair time, and wondering where your profit margin went, this is the webinar for you

TheClearOrtho Difference

We are not AI; we are aligner clinical experts with over 15 years of experience in the clear aligner journey (72,000 cases, over 3,000 drs. trained around the world). We bridge the gap between software defaults and clinical reality



Join our clinical experts for a one-hour webinar

What this webinar will cover

Profitability vs. "Guessing"

Connect clinical precision directly to your bottom line.

The Hidden Costs of Unpredictable Plans: Analysing how "free" refinements drain profitability through extra chair time and overhead.



Predictability is the new Profitability.

The "Why" Behind the Struggle

The GP Aligner Paradox: Why do you start cases with excitement but finish them with frustration (after mid-course corrections and dealing with untracked teeth).

Patient Fatigue: Long drawn out treatments result in lower referrals.

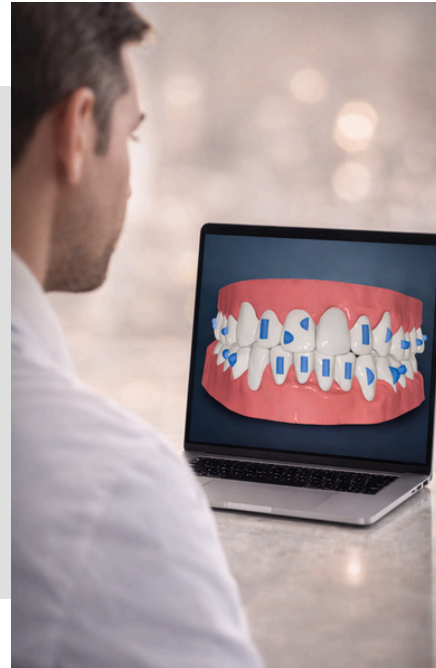
Predictable Planning: The Secret Sauce

Biology Over Algorithms:
Why AI-generated plans fail in the mouth, and how human-centric planning bridges that gap.

Removing “Noise” Movements:
How we remove unnecessary tooth movements that look good on screen but don't translate clinically.

The Science of Staging:
Preserving the shortest, safest route to alignment. We review bone levels and root angulation, not just crowns.

The Physics of Plastic:
How Blanc Aligners are engineered to match the force delivery required for planned movements, together with their features. Not all plastics are the same.



Biomechanics no Cartoonodontics!

The ClearOrtho Difference

Hand-Holding as a Service

Zero-Risk Submissions

Our review process involves reviewing your scans, radiographs and photos before the plan is finalised.



The Clinical Concierge:

Introduction to the support team that acts as your "remote orthodontic department."



Troubleshooting Before it Happens:

How we anticipate difficult movements (rotations or extrusions) and build in the right mechanics, ensuring treatment stays on plan with mid-course assessments.



How we can help you

Optimise Your Existing Workflow:

How dentists using other brands (like Invisalign or Spark) can use our planning expertise to fix "stuck" cases. We can create plans for any system to ensure they actually work.

Blanc Aligners

Try Blanc Aligners designed to work with OrthoVue and The Blanc System Workflow.



Patient Communication:

Provide accurate timelines for your patients, increasing case acceptance and five-star reviews.

In-Treatment Assessment:

The solution to reduce extensive refinements, allowing you to spot "off-tracking" early.

Offer: Submit your first case this week for a complimentary 'Predictability Audit'

The Path to Profit



Plan with
precision



Trust 15 yrs
biomechanics
experience



Reduce
refinements to
maximise profit.